

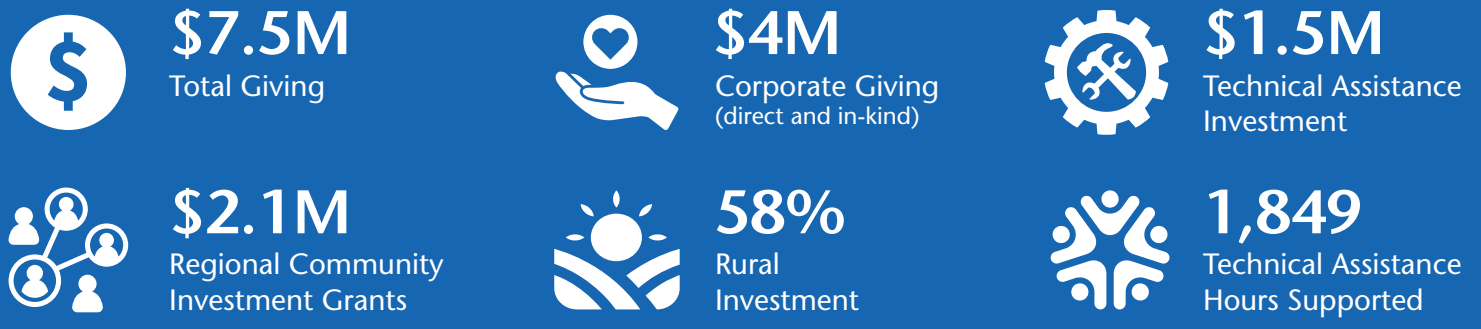
# 560

Organizations Supported

# community partnerships

January 1 to December 31, 2024

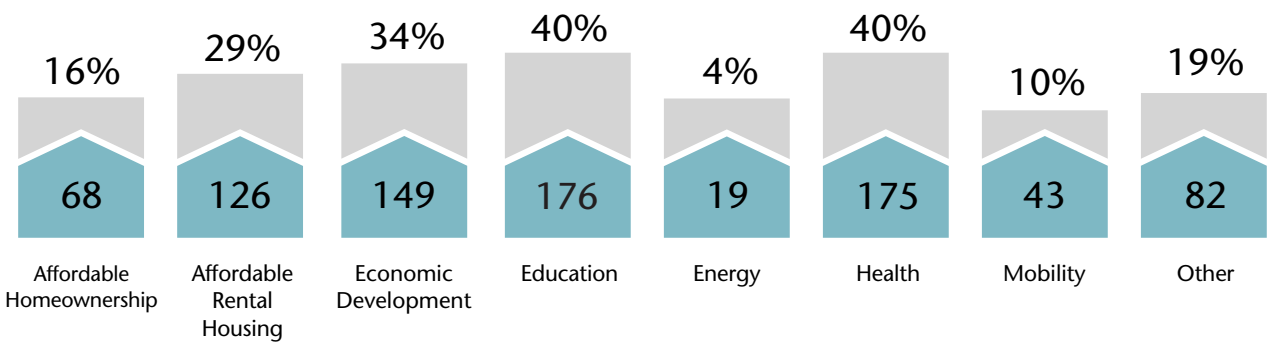
## Who We Serve



## Investment by Type



## Corporate Giving by Recipient Areas of Focus



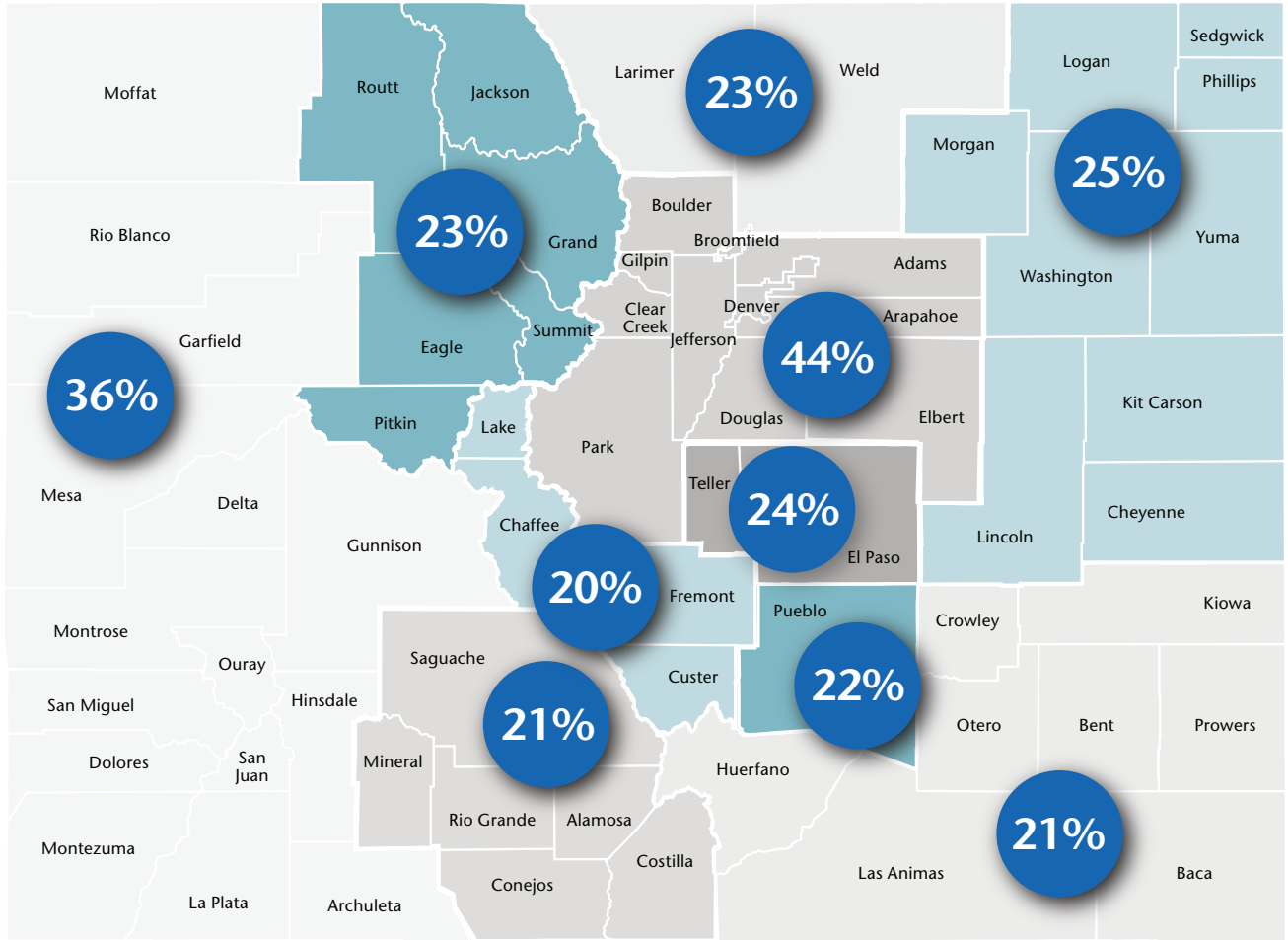
435 Unique Organizations  
Organizations can select multiple areas of focus

## Small-scale Housing Technical Assistance



## chfa investment

## Areas Served by Organizations Supported



507 Organizations Supported  
Organizations can serve multiple regions

Region	Number of Organizations	Percent of Total	Region	Number of Organizations	Percent of Total
Denver Metro	225	44%	Pueblo	110	22%
El Paso/Teller	124	24%	San Luis Valley	104	21%
Larimer/Weld	116	23%	Southeast	104	21%
Mountain Rural/Resort	117	23%	Upper Arkansas Valley	101	20%
Northeast	128	25%	Western Slope	185	36%

Data accessed February 2025.

800.877.chfa (2432)      800.659.2656 tdd      www.chfainfo.com

With respect to its programs, services, activities, and employment practices, Colorado Housing and Finance Authority prohibits unlawful discrimination against applicants or employees on the basis of age 40 years and over, race, sex, sexual orientation, gender identity, gender expression, color, religion, national origin, disability, military status, genetic information, marital status or any other status protected by applicable federal, state or local laws. Requests for reasonable accommodation, the provision of auxiliary aids, or any complaints alleging violation of this nondiscrimination policy should be directed to the Nondiscrimination Coordinator, 1.800.877.2432, TDD/TTY 800.659.2656, CHFA, 1981 Blake Street, Denver, Colorado 80202-1272, available weekdays 8:00am to 5:00pm.

