

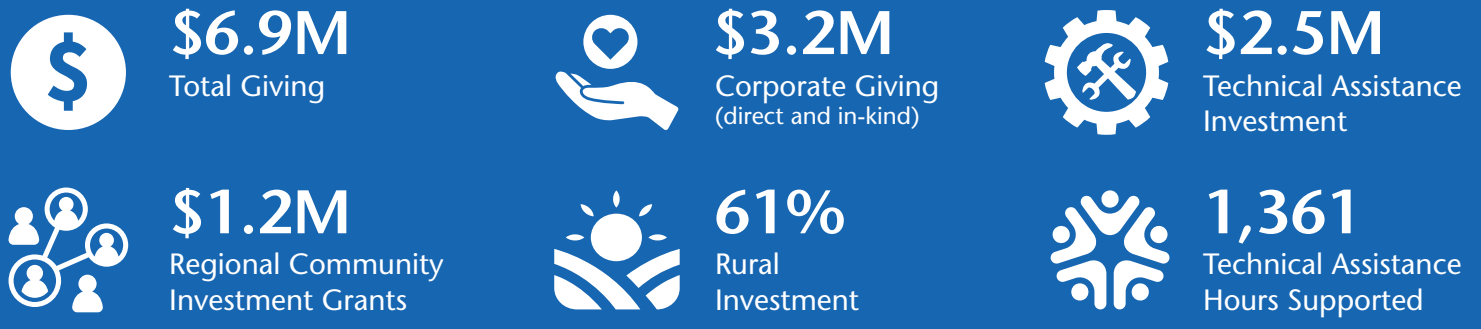
# 490

Organizations Supported

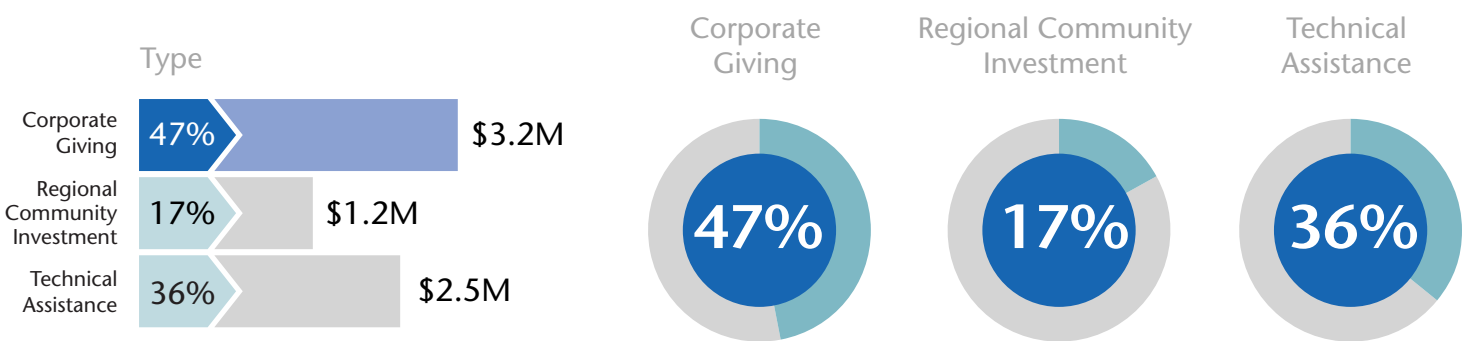
# community partnerships

January 1 to December 31, 2023

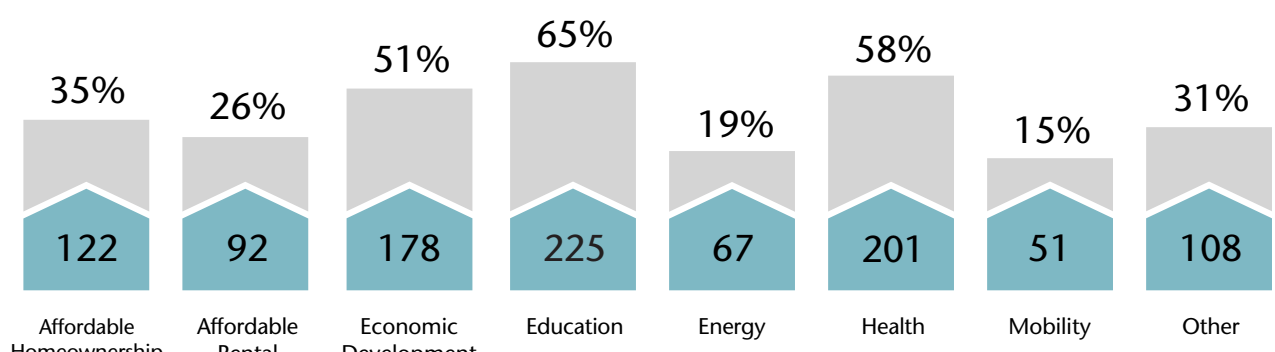
## Who We Serve



## Investment by Type



## Corporate Giving Recipient Areas of Focus



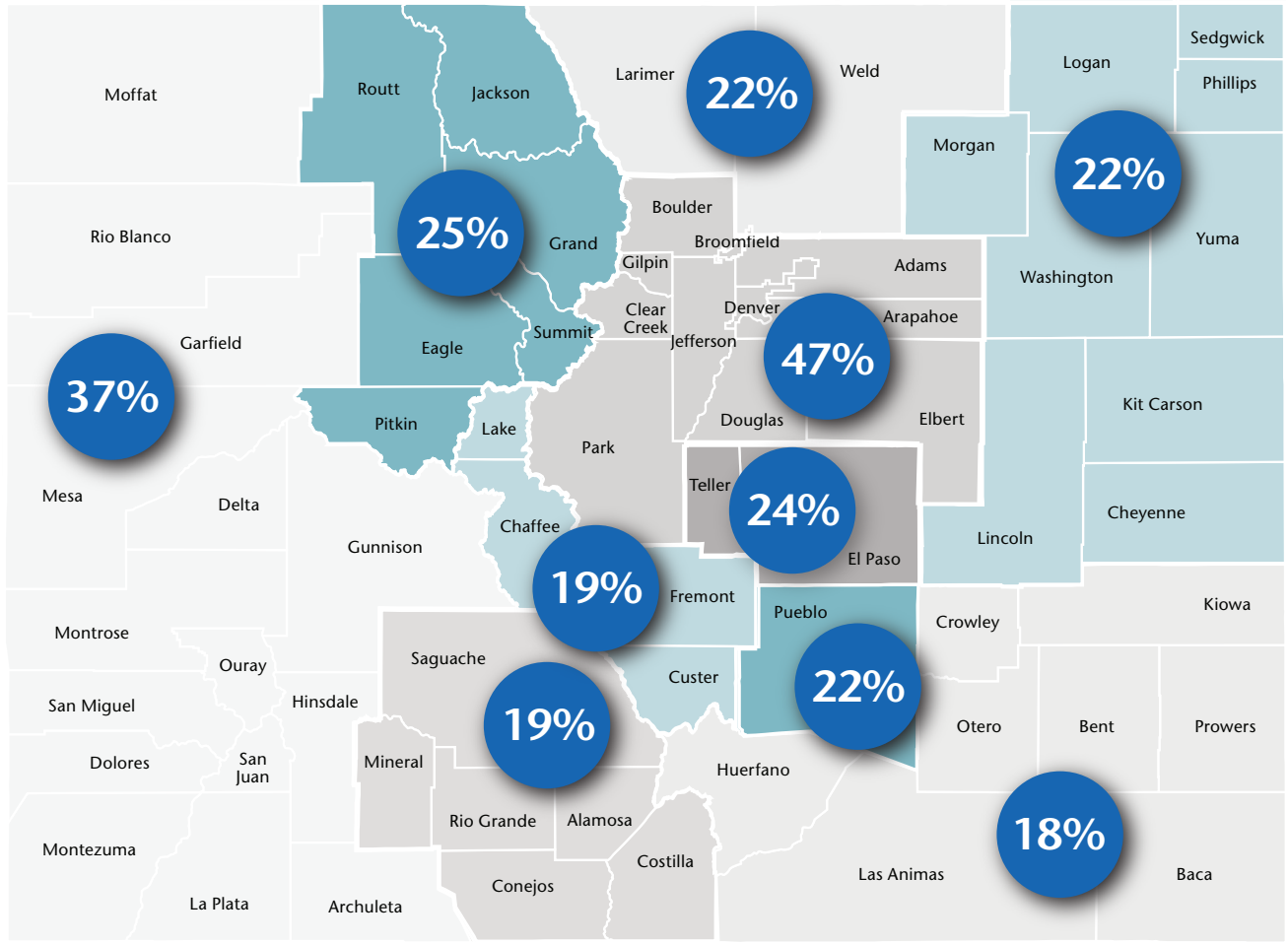
348 Unique Organizations  
Organizations can select multiple areas of focus

## Small-scale Housing Technical Assistance



## chfa investment

## Areas Served by Organizations Supported



490 Organizations Supported  
Organizations can serve multiple regions.

	Number of Organizations	Percent of Total		Number of Organizations	Percent of Total
Denver Metro	205	47%	Pueblo	95	22%
El Paso/Teller	103	24%	San Luis Valley	81	19%
Larimer/Weld	94	22%	Southeast	76	18%
Mountain Rural/Resort	107	25%	Upper Arkansas Valley	84	19%
Northeast	97	22%	Western Slope	158	37%

Data accessed February 2024.

800.877.chfa (2432)      800.659.2656 tdd      www.chfainfo.com

With respect to its programs, services, activities, and employment practices, Colorado Housing and Finance Authority prohibits unlawful discrimination against applicants or employees on the basis of age 40 years and over, race, sex, sexual orientation, gender identity, gender expression, color, religion, national origin, disability, military status, genetic information, marital status or any other status protected by applicable federal, state or local law. Requests for reasonable accommodation, the provision of auxiliary aids, or any complaints alleging violation of this nondiscrimination policy should be directed to the Nondiscrimination Coordinator, 1.800.877.2432, TDD/TTY 800.659.2656, CHFA, 1981 Blake Street, Denver, Colorado 80202-1272, available weekdays 8:00am to 5:00pm.



02/24.v1